

# CTE Summer Programs & Out of School STEM

Grants due February 5, 2016

Tom Thompson  
[tom.thompson@ode.state.or.us](mailto:tom.thompson@ode.state.or.us)  
503.947.5790

Nathan Mauro  
[nathan.mauro@ode.state.or.us](mailto:nathan.mauro@ode.state.or.us)  
503.947.5686



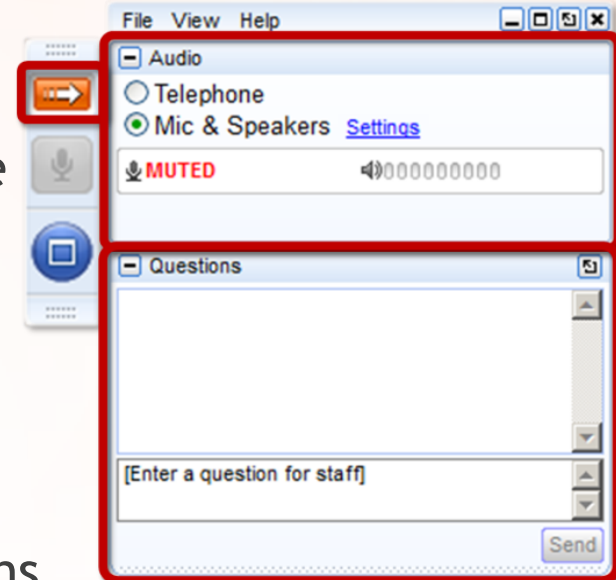
# Technical Assistance Webinar



You will be automatically muted for this webinar.

## Questions & Answers

Submit all questions through the webinar question box



We will answer as many questions as possible at the end of the presentation and post answers to all questions at:

<http://www.ode.state.or.us/search/page/?id=3602>

<http://www.ode.state.or.us/search/page/?id=1626>

# Two Grants - Two Visions



Request for Proposal (RFP)

Career and Technical Education (CTE) Summer Programs

2015-2017

**GRANT APPLICATION DUE DATE: FRIDAY, FEBRUARY 5, 2016  
5:00 PM PT**

Oregon Department of Education  
Office of Learning  
255 Capitol Street NE  
Salem, OR 97310-0203



Request for Proposal (RFP)

Science Technology Engineering and Mathematics (STEM) Innovation Grant:  
Out of School STEM Innovation

2015-2017

**GRANT APPLICATION DUE DATE: FRIDAY, FEBRUARY 5, 2016  
5:00 P.M. (PT)**

Oregon Department of Education  
Office of Learning  
255 Capitol Street NE  
Salem, OR 97310-0203

# Grant Overview

## *CTE Summer Programs*

This grant is funding several district or regional level programs that will expand upon existing CTE programs to offer students experiences beyond what they experience in the classroom.



## *Out of School STEM*

This grant is funding one or more regional projects to develop a statewide network of out-of-school STEM education providers which will offer programs that help students see themselves in future STEM careers.



# Grant Participation

## Grant Recipient

- Responsible for implementation and outcomes
- Fiscally responsible for expenditure of funds

## Participant

- May be on a Partnership Team
- May provide services for the programs
- May have students who benefit from the programs

# Background & Legislative Intent

## July 2015

- Signed HB 3072 and HB 5016
- 1.75 million for CTE Summer Programs
- \$1.5 million for Out of School STEM Innovation

# Equity Lens

Incorporate and adopt the principles of the Oregon Equity Lens

- Students experiencing poverty
- Minorities
- Students with disabilities
- English language learners
- Nontraditional students

Focus on economic prosperity

- Pathways to high wage and high demand occupations
- College and career ready

# Purpose of the Grant

## *CTE Summer Programs*

- Historically underserved students
- High wage and high demand Jobs
- Link to existing CTE Programs
- State-of-the-art experiences
- Beyond what's available during regular school
- Summer programs for grades 7-12

## *Out of School STEM*

- Historically underserved students
- Envision future STEM careers
- STEM Mindset: interest & motivation
- Interactive & applied learning
- Develop a statewide network
- Generate Baseline data
- Outside of school for grades 4-8



# Type of Grant

## *CTE Summer Programs*

- Competitive grant
- Total available funds: \$1,750,000
- Up to **10 awards**
- Up to **\$200,000** per award

## *Out of School STEM*

- Competitive grant
- Total available funds: \$1,500,000
- Up to **4 awards**
- Up to **\$1,500,000** per award

# Eligibility

- Fiscal Agent
  - Public school district,
  - Education service district (ESD)
  - Public charter school
  - Community college or university
  - Combination
- Fiscal Agent must retain control
- Contracted services are allowable
- Other Oregon entities in the partnership

# Grant Requirements

## *CTE Partnership Team*

- K-12 public school district (>50% underserved)
- Postsecondary education
- Business, industry, labor, and/or trades
- Non-school service provider

## *STEM Partnership Team*

- K-12 public education
- Postsecondary education
- Business, industry, labor, and/or trades
- **STEM Hubs**
- **Underserved families**
- Community based nonprofit

# Grant Requirements (Cont.)

## *CTE Summer Program*

- Recruitment of underserved students
- Aligned to local CTE programs
- Link to High Wage and High Demand
- One week middle school program
- Two week high school program
- Evaluation plan to improve program

## *Out of School STEM*

- 70+% underserved participants in grades 4-8
- Aligned to math & science standards
- Predominantly non-school location(s)
- Interaction with STEM role models
- Sufficient duration for outcomes
- Create a networked community

# Allowable Use of Funds

- Stipend and travel reimbursements
- Materials and equipment
- Staffing and benefits
- Professional development
- Transportation, food, and lodging for students
- Admin - no more than 5%
- Reasonable, Prudent, Necessary

# Not Allowable Use of Funds

- Costs associated with the proposal
- Obligations outside of the grant period
- Purchases for others
- Goods or services outside of the approved outcomes and activities
- Office equipment unless linked to program outcomes
- Capital expenses, vehicles, real property

# Timeline and Important Dates

## CTE Summer Program

Completion Dates	Activities
December 18, 2015	Request for Application (RFA) available online.
January 6, 2016	Technical Assistance Webinar – Understanding the RFA <a href="https://attendee.gotowebinar.com/register/8772964066774731009">https://attendee.gotowebinar.com/register/8772964066774731009</a>
February 5, 2016	<b>Applications due to ODE by 5:00 PM PDT</b>
February 19, 2016	Applicants expected to be notified of preliminary award
February 26, 2016	Deadline for appeal submission
March 4, 2016	Applicants expected to be notified of final award
June to August 2016	Summer programs offered
April 28, 2017	Updated budget for 2017 summer program due
June to August 2017	Summer programs offered
September 30, 2017	<b>Final activity report due to ODE by 5:00 PM</b>

## Out of School STEM

Completion Dates	Activities
December 18, 2015	Request for Proposal (RFP) available online.
January 6, 2016	Technical Assistance Webinar – Understanding the RFP Register for webinar at: <a href="https://attendee.gotowebinar.com/register/8772964066774731009">https://attendee.gotowebinar.com/register/8772964066774731009</a>
February 5, 2016	Applications due to ODE by 5:00 PM PDT
February 19, 2016	Applicants expected to be notified of preliminary award
February 26, 2016	Deadline for appeal submission
March 4, 2016	Applicants expected to be notified of final award
June 30, 2016	Progress Report 1 due to ODE by 5:00 PM
September 30, 2016	Progress Report 2 due to ODE by 5:00 PM
June 30, 2017	Expenditure and Progress Report 3 due to ODE by 5:00PM
September 30, 2017	Final Activity and Expenditure Report due to ODE by 5:00 PM

# Required Application Section

## *CTE Summer Program*

1. Cover Page - Appendix B
2. Statement of Assurances - Appendix C
3. *Application Narrative* - 10 page limit
4. List of Project Partners - Appendix D
5. Activities and Timeline - Appendix E
6. Budget Worksheet - Appendix F
7. Budget Narrative - No page limit
8. Partner Commitment Letters
9. Optional - Supporting materials

## *Out of School STEM*

1. Cover Page - Appendix A
2. Statement of Assurances - Appendix B
3. *Application Narrative* - 15 page limit
4. Budget Worksheet - Appendix C
5. Partner Commitment Letters
6. Optional - Supporting materials



# Application Narrative

## *CTE Summer Program*

- A. Partnership Team
- B. Summer Program Outline
- C. Risk Management
- D. Evaluation and Implementation
- E. Equity

## *Out of School STEM*

- A. Partnerships
- B. Collective Impact Model
- C. Underserved Students
- D. Networked Learning Community
- E. Evaluation
- F. Budget Narrative

# Scoring

## ***CTE Summer Program***

***110 Points***

### **Application Narrative - 90 Points**

- A.** Partnership Team - 20 Points
- B.** Summer Program Outline - 20 Points
- C.** Risk Management - 20 Points
- D.** Program Evaluation - 10 Points
- E.** Equity - 20 Points

### **(F) Activities and Timeline - 10 Points**

### **(G) Budget - 10 Points**

- Budget Worksheet
- Budget Narrative

## ***Out of School STEM***

***90 Points***

- A.** Partnerships - 15 Points
- B.** Collective Impact Model - 15 Points
- C.** Student Experiences - 15 Points
- D.** Underserved Students - 15 Points
- E.** Net. Learning Community - 10 Points
- F.** Evaluation - 10 Points
- G.** Budget - 10 Points

# Questions?

Tom Thompson - [tom.thompson@ode.state.or.us](mailto:tom.thompson@ode.state.or.us)

Nathan Mauro- [nathan.mauro@ode.state.or.us](mailto:nathan.mauro@ode.state.or.us)