

ACCOUNTABILITY INFORMATION REQUIRED BY THE FEDERAL NO CHILD LEFT BEHIND ACT

The information below is used to determine the Adequate Yearly Progress designation for your school. A school is designated as *Not Meeting AYP* if any indicator is determined to be *Not Met*. The Student Achievement and Student Participation ratings are based on 2002-2003 and 2003-2004 Oregon Statewide Assessments for the students in your school identified as enrolled for a full academic year. The statewide goal for the minimum percentage of students expected to meet or exceed standards is 40.0% in English/Language Arts and 39.0% in Mathematics. Student Participation is expected to be 95.0% or greater. The statewide goal for the minimum graduation rate is 68.1%. The statewide goal for the minimum attendance rate is 92.0%. For more information, please view documents at www.ode.state.or.us/data/reportcard/reports.aspx

STUDENT GROUP	STUDENT ACHIEVEMENT		STUDENT PARTICIPATION		GRADUATION
	ENGLISH/LANGUAGE ARTS	MATHEMATICS	ENGLISH/LANGUAGE ARTS	MATHEMATICS	
Race/Ethnicity					
White	MET	MET	MET	MET	MET
African American/Black	NA	NA	NA	NA	NA
Hispanic	NOT MET	NOT MET	NOT MET	NOT MET	NOT MET
Asian/Pacific Islander	MET	MET	MET	MET	MET
Am. Indian/Alaskan Native	NA	NA	NA	NA	NA
Multi-Racial/Multi-Ethnic	MET	NA	MET	MET	---
Special Education	NOT MET	NOT MET	NOT MET	NOT MET	NOT MET
Limited English Proficient	NOT MET	NOT MET	NOT MET	MET	NOT MET
Economically Disadvantaged	NOT MET	NOT MET	MET	MET	MET
All Students	MET	MET	MET	MET	MET

NA Too few test scores or students to determine a rating.

--- No data available

Department of Education Notes

LOCAL INFORMATION PROVIDED BY YOUR SCHOOL OR DISTRICT

2003-2004 School Report Card

SUNSET
HIGH SCHOOL



Dear Parents and Community Members,

December 7, 2004

The Oregon Department of Education is proud to issue the sixth annual school report card. As Oregon schools and districts continue to face many challenges, educators remain committed to providing the highest quality education for Oregon students. This year you will find two ratings displayed on this report card: an Oregon rating and a federal rating required by the No Child Left Behind Act. The report card is not meant to tell you everything about your school, but it offers a starting point for discussions about where improvement might be needed and for celebrating successes in education for Oregon's children.


Susan Castillo, State Superintendent of Public Instruction

Federal Adequate Yearly Progress Rating: NOT MET

DID NOT MEET MET
See rating details on back page

Oregon Report Card Overall Rating: SATISFACTORY



SCHOOL AT A GLANCE



Testing Participation

School Characteristics Rating: **EXCEPTIONAL**

Grade 10

	School	State
Participation in 2003-2004 Statewide Assessment	99.8%	99.7%

School Size

	School
Number of Students	1,842

English Language Learners

	School
Percentage of Students in ESL Programs	9.0%

Students Graduating 2002-2003

	School	State
With a Diploma	337	32,466
With a Diploma and a CIM	56	10,494

SAT Scores

	School	State	Nation
Verbal	558	527	508
Math	563	528	518
Percentage Tested	69%	56%	---
Number Tested	277	19,253	---

Expulsions

	School	State
Number of Expulsions Due to Weapons	0	387

Staffing

	School
Administrators (FTE)	4.0
Teachers (FTE)	89.8
<ul style="list-style-type: none"> Average Years of Experience 	12.3
<ul style="list-style-type: none"> With a Master's Degree or Higher 	80.6%
<ul style="list-style-type: none"> With Emergency or Provisional Credential as of October 8, 2004 	4.8%
<ul style="list-style-type: none"> Classes Taught by Teachers Who Meet Federal Definition of Highly Qualified Teacher 	96.7%
Instructional Assistants (FTE)	16.2
Other Staff (FTE)	30.7

Department of Education Notes

SCHOOL RATINGS AND SUPPORTING DATA



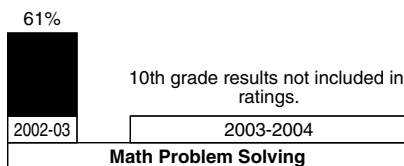
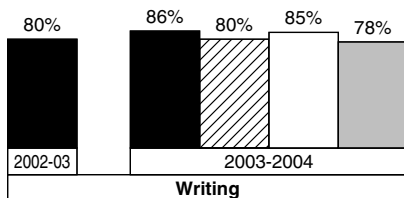
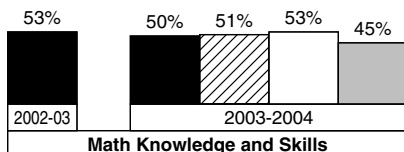
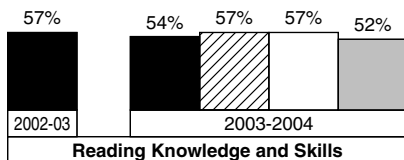
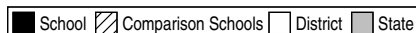
Academic Achievement

Student Performance Rating: **SATISFACTORY**

Percentage of Students Meeting Standards

The graphs below show the percentage of students in your school that met or exceeded the state standards on Oregon Statewide Assessments during the last two school years. District, state, and comparison school averages are displayed. Comparison schools are Oregon schools with similar demographics.

Grade 10



Improvement

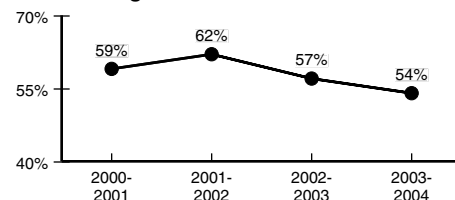
Assessments, Attendance, Dropout

Improvement Rating: **STAYED ABOUT THE SAME**

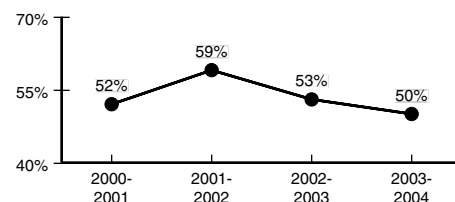
Four-Year Improvement

The graphs below show change during the past four years in the percentage of students meeting standards on Reading and Math Knowledge and Skills Statewide Assessments and in attendance and dropout rates. Improvement ratings are described by one of the following: Improved, Stayed About the Same, or Declined.

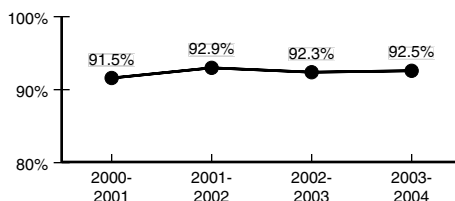
Grade 10 Reading



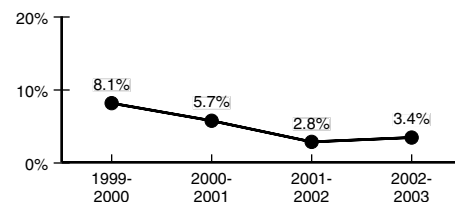
Grade 10 Mathematics



Attendance



Dropout Rate



SCHOOL RATINGS AND SUPPORTING DATA



Attendance/Dropout Rates

Student Behavior Rating: **STRONG**

Attendance	School	District	State	Dropout	Number in School	School	District	State
2002-2003	92.3%	93.9%	91.8%	2001-2002	51	2.8%	4.1%	4.9%
2003-2004	92.5%	94.2%	91.4%	2002-2003	63	3.4%	2.8%	4.4%

Statewide Assessments

The table below shows the percentage of students in your school that exceeded, met, or did not meet state standards and participated in 2003-2004 Oregon Statewide Assessments. For more information, see www.ode.state.or.us/search/results/?id=233

STUDENT GROUP Race/Ethnicity	STUDENT ACHIEVEMENT						STUDENT PARTICIPATION	
	ENGLISH/ LANGUAGE ARTS			MATHEMATICS			ENGLISH/ LANGUAGE ARTS	MATHEMATICS
	EXCEEDED %	MET %	NOT MET %	EXCEEDED %	MET %	NOT MET %	%	%
White	13.3	47.6	39.1	21.3	32.0	46.7	100.0	100.0
African American/Black	0.0	23.8	76.2	0.0	36.4	63.6	100.0	100.0
Hispanic	0.9	8.7	90.4	0.0	5.6	94.4	100.0	100.0
Asian/Pacific Islander	27.0	47.0	26.1	49.1	24.6	26.3	100.0	100.0
American Indian/Alaskan Native	*	*	*	*	*	*	100.0	100.0
Multi-Racial/Multi-Ethnic	12.5	50.0	37.5	25.0	0.0	75.0	100.0	100.0
Male	10.8	38.7	50.5	23.3	30.6	46.1	100.0	100.0
Female	15.1	45.2	39.7	20.5	24.4	55.1	100.0	100.0
Students with Disabilities	1.9	15.2	82.9	4.1	8.2	87.8	100.0	100.0
Migrant	< 5.0	< 5.0	> 95.0	< 5.0	< 5.0	> 95.0	100.0	100.0
Limited English Proficient	< 5.0	< 5.0	> 95.0	< 5.0	< 5.0	> 95.0	100.0	100.0
Economically Disadvantaged	3.2	23.2	73.6	5.7	14.2	80.2	100.0	100.0
All Students	13.1	42.2	44.7	21.8	27.3	51.0	100.0	100.0

* Not displayed to protect student confidentiality.

--- No data available

Department of Education Notes