

2007-2008 District Report Card



Dear Parents and Community Members,

October 7, 2008

The Oregon Department of Education is proud to issue the tenth annual school report card. As Oregon schools and districts continue to face many challenges, educators remain committed to providing the highest quality education for Oregon students. This year you will find a federal rating displayed on this report card. This district rating is required by the No Child Left Behind Act. The report card is not meant to tell you everything about your district, but it offers a starting point for discussions about where improvement might be needed and for celebrating successes in education for Oregon's children.

Federal Adequate Yearly Progress Rating: MET

- MET See rating details on back page
 DID NOT MEET Identified for District Improvement

Susan Castillo, State Superintendent of Public Instruction

SCHOOL RATINGS

SCHOOLS	Overall	Academic Achievement Student Performance	Attendance/Dropout Student Behavior	Improvement	School Characteristics
Bryant Elementary School	Exceptional	Exceptional	Strong	Stayed About The Same	Exceptional
Forest Hills Elementary School	Exceptional	Exceptional	Strong	Stayed About The Same	Exceptional
Hallinan Elementary School	Exceptional	Exceptional	Strong	Stayed About The Same	Exceptional
Lake Grove Elementary School	Exceptional	Exceptional	Strong	Stayed About The Same	Exceptional
Lake Oswego Junior High School	Exceptional	Exceptional	Strong	Stayed About The Same	Exceptional
Lake Oswego Senior High School	Exceptional	Exceptional	Exceptional	Stayed About The Same	Exceptional
Lakeridge High School	Exceptional	Exceptional	Exceptional	Stayed About The Same	Exceptional
Oak Creek Elementary School	Exceptional	Exceptional	Exceptional	Stayed About The Same	Exceptional
Palisades Elementary School	Exceptional	Exceptional	Exceptional	Stayed About The Same	Exceptional
River Grove Elementary School	Exceptional	Exceptional	Strong	Stayed About The Same	Exceptional
Uplands Elementary School	Exceptional	Exceptional	Exceptional	Stayed About The Same	Exceptional
Waluga Junior High School	Exceptional	Exceptional	Satisfactory	Stayed About The Same	Exceptional
Westridge Elementary School	Exceptional	Exceptional	Strong	Stayed About The Same	Exceptional

ACCOUNTABILITY INFORMATION REQUIRED BY THE FEDERAL NO CHILD LEFT BEHIND ACT

The information below is used to determine the Adequate Yearly Progress designation for your district. A district is designated as *Not Meeting AYP* if any indicator is determined to be *Not Met*. The Student Achievement and Student Participation ratings are based on 2006-2007 and 2007-2008 Oregon Statewide Assessments for the students in your district identified as enrolled for a full academic year. The statewide goal for the minimum percentage of students expected to meet or exceed standards is 60% in English/Language Arts and 59% in Mathematics. Student Participation is expected to be 95% or greater. The statewide goal for the minimum graduation rate is 68.1%. The statewide goal for the minimum attendance rate is 92.0%. For more information, please view documents at www.ode.state.or.us/data/reportcard/reports.aspx

STUDENT GROUP	STUDENT ACHIEVEMENT		STUDENT PARTICIPATION		GRADUATION
	ENGLISH/LANGUAGE ARTS	MATHEMATICS	ENGLISH/LANGUAGE ARTS	MATHEMATICS	
Race/Ethnicity					
White	MET	MET	MET	MET	MET
African American/Black	NA	NA	NA	NA	NA
Hispanic	MET	MET	MET	MET	MET
Asian/Pacific Islander	MET	MET	MET	MET	MET
Am. Indian/Alaskan Native	NA	NA	NA	NA	NA
Multi-Racial/Multi-Ethnic	MET	MET	MET	MET	NA
Students with Disabilities	MET	MET	MET	MET	MET
Limited English Proficient	MET	MET	MET	MET	NA
Economically Disadvantaged	MET	MET	MET	MET	NOT MET
All Students	MET	MET	MET	MET	MET

NA Too few test scores or students to determine a rating.

Department of Education Notes

FEDERAL DESIGNATION FOR TITLE 1 SCHOOLS

REQUIRED BY THE FEDERAL NO CHILD LEFT BEHIND ACT	DISTRICT		STATE	
	SCHOOLS	PERCENTAGE	SCHOOLS	PERCENTAGE
Identified for School Improvement (SI1 or SI2)	0	0.0%	24	1.9%
Identified for Corrective Action (CA) or Restructuring (R1)	0	0.0%	16	1.3%

For more information, contact your local school or district.

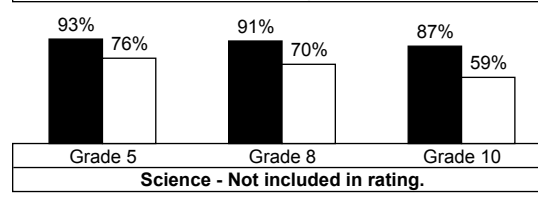
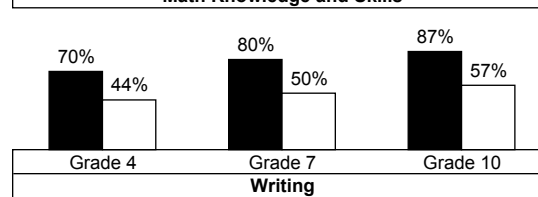
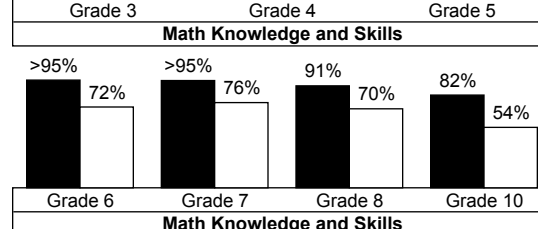
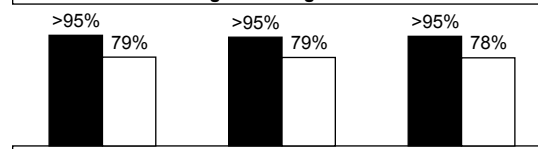
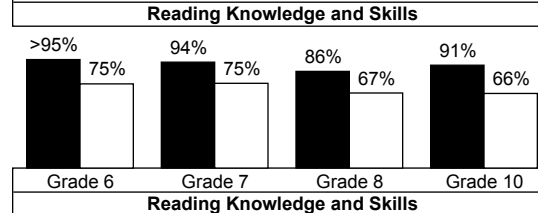
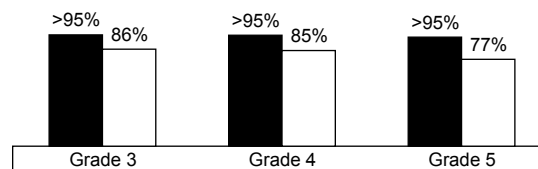
DISTRICT INFORMATION

Academic Achievement

Percentage of Students Meeting Standards

The graphs below show the percentage of students in your district at the indicated grades that met or exceeded the state standards on Oregon Statewide Assessments during the 2007-2008 school year. State averages are also displayed.

District
 State



District at a Glance

Testing Participation in District	District	State
Participation in 2007-2008 Statewide Assessment	99.4%	98.5%
Number of Reading Test Exemptions for Newly Enrolled Limited English Proficient Students	3.0	707.0

Attendance	District	State
2007-2008 School Year	95.1%	93.1%

District Staffing	District
Administrators (FTE)	21.0
Teachers (FTE)	359.6
• Average Years of Experience	12.8
• With a Master's Degree or Higher	67.1%
• With Emergency or Provisional Credential as of January 15, 2008	1.8%
Educational Assistants (FTE)	90.4
Other Staff (FTE)	193.6

Highly Qualified* Teachers	Classes Taught By HQT		Classes Taught By Non-HQT	
	District	State	District	State
All Schools	97.1%	91.7%	2.9%	8.3%
High Poverty Schools	---	91.8%	---	8.2%
Low Poverty Schools	97.1%	93.3%	2.9%	6.7%

* Federal No Child Left Behind Definition

Special Populations	District	State
Special Education	10.8%	14.5%
ESL Programs	1.0%	10.0%
Attending School in Another District	1.3%	0.5%
Attending School from Another District	0.5%	0.2%

Video Conferencing	District	State
Video Conferencing Facilities	0	179

DISTRICT INFORMATION

Financial Data

General Fund Expenditures

The table below shows dollars spent per student by your district for the 2006-2007 school year. For more information, visit the Database Initiative Project website: www.ode.state.or.us/data/reports/toc.aspx

General Fund	District	State
Direct Classroom	\$3,974	\$4,215
Classroom Support	\$1,319	\$1,291
Building Support	\$1,321	\$1,296
Central Support	\$348	\$347

Education Service District	District	State
ESD Support Per Student	\$229	\$377

Bond Levy / Local Option	Number of Elections	Election Result	
		Yes	No
Election Year: 2007	0	0	0
Election Year: 2006	0	0	0
Election Year: 2005	0	0	0

STATEWIDE ASSESSMENT RESULTS

The table below shows the percentage of students in your district in grades 3-8 and 10 that exceeded, met, or did not meet state standards and participated in 2007-2008 Oregon Statewide Assessments. For more information, see www.ode.state.or.us/data/schoolanddistrict/testresults/reporting/PublicRpt.aspx

STUDENT GROUP	STUDENT ACHIEVEMENT						STUDENT PARTICIPATION	
	ENGLISH/ LANGUAGE ARTS			MATHEMATICS			ENGLISH/ LANGUAGE ARTS	MATHEMATICS
	EXCEEDED %	MET %	NOT MET %	EXCEEDED %	MET %	NOT MET %	%	%
Race/Ethnicity								
White	58.2	35.8	6.1	57.9	34.9	7.2	99.6	99.6
African American/Black	12.9	67.7	19.4	25.8	48.4	25.8	100.0	100.0
Hispanic	43.6	42.7	13.6	38.7	44.1	17.1	99.1	99.1
Asian/Pacific Islander	60.4	32.0	7.6	> 95.0	> 95.0	< 5.0	99.4	99.4
American Indian/Alaskan Native	31.4	42.9	25.7	30.3	42.4	27.3	100.0	97.1
Multi-Racial/Multi-Ethnic	64.0	26.7	9.3	67.4	25.6	7.0	100.0	100.0
Male	56.1	36.1	7.8	59.9	32.7	7.3	99.5	99.5
Female	59.2	35.1	5.7	56.3	35.9	7.8	99.7	99.7
Talented and Gifted	> 95.0	> 95.0	< 5.0	> 95.0	> 95.0	< 5.0	99.8	99.9
Students with Disabilities	33.8	40.6	25.6	32.7	41.2	26.1	99.0	99.0
Migrant	---	---	---	---	---	---	---	---
Limited English Proficient	16.7	40.0	43.3	35.5	32.3	32.3	97.3	97.3
Economically Disadvantaged	28.2	46.3	25.6	27.3	45.8	26.9	99.6	99.6
All Students	57.6	35.6	6.8	58.2	34.3	7.5	99.6	99.6
Extended Assessment	37.5	12.5	50.0	23.8	9.5	66.7	100.0	100.0

* Not displayed to protect student confidentiality.

--- No data available

Department of Education Notes