

STUDENT PERFORMANCE DATA

Math Knowledge and Skills Grade 06, 07, 08		Weight	2005-2006		2006-2007	
			Students	Weighted	Students	Weighted
Exceeds	133	333	44,289	331	44,023	
Meets	100	231	23,100	253	25,300	
Nearly Meets	67	51	3,417	66	4,422	
Low	33	43	1,419	75	2,475	
Very Low	0	8	0	10	0	
Totals		666	72,225	735	76,220	
Index**		108.4		103.7		

Reading Knowledge and Skills Grade 06, 07, 08		Weight	2005-2006		2006-2007	
			Students	Weighted	Students	Weighted
Exceeds	133	354	47,082	313	41,629	
Meets	100	239	23,900	286	28,600	
Nearly Meets	67	53	3,551	81	5,427	
Low	33	23	759	40	1,320	
Very Low	0	0	0	13	0	
Totals		669	75,292	733	76,976	
Index**		112.5		105.0		

Writing Grade 07		Weight	2005-2006		2006-2007	
			Students	Weighted	Students	Weighted
Exceeds	133	8	1,064	13	1,729	
Meets	100	136	13,600	150	15,000	
Nearly Meets	67	36	2,412	47	3,149	
Low	33	39	1,287	32	1,056	
Very Low	0	1	0	0	0	
Totals		220	18,363	242	20,934	
Index**		83.5		86.5		

** Index = Total Weighted / Total Students

STUDENT PERFORMANCE FORMULAE

$$\text{Student Performance} = [(.50 * \text{Math Index}) + (.50 * \text{Read Index})]$$

$$\text{Student Performance 2005-2006} = [(.50 * 108.4) + (.50 * 112.5)] = 110.5$$

$$\text{Student Performance 2006-2007} = [(.50 * 103.7) + (.50 * 105.0)] = 104.4$$

Student Performance Rating: **Strong**

$$\text{Student Performance} = (\text{Student Performance 05-06} + \text{Student Performance 06-07}) / 2$$

$$(110.5 + 104.4) / 2 = 107.5$$

$$\text{Rating Score} = 3$$

Rating Score	0	1	2	3	4
Rating	Unacceptable	Low	Satisfactory	Strong	Exceptional
Index Score	Less than 58.0	58.0 - 67.9	68.0 - 97.9	98.0 - 112.9	113.0 or Higher

STUDENT BEHAVIOR DATA

Attendance	School
2005-2006	93.0%
2006-2007	92.9%

STUDENT BEHAVIOR FORMULAE

Two-Year Average Attendance Index 2005-06, 2006-07 = [(Attendance Rate 2005-06 + Attendance Rate 2006-07) / 2]
 = [(93.0 + 92.9) / 2] = 93.0

Student Behavior Rating: Satisfactory					
Student Behavior = Two-Year Avg. Attendance Index					
93.0					
Rating Score = 2					
Rating Score	0	1	2	3	4
Rating	Unacceptable	Low	Satisfactory	Strong	Exceptional
Index Score	Less than 89.0	89.0 - 91.9	92.0 - 93.9	94.0 - 95.9	96.0 or Higher

* Please note that all numbers are rounded to the nearest tenth after every multiplication or division.

IMPROVEMENT DATA

Math Knowledge and Skills Grade 06, 07, 08

To provide for comparability over time, student performance for all years is reported based on the Achievement/Performance standards in place for the 2005-2006 and prior school years.

	Weight	2003-2004		2004-2005		2005-2006		2006-2007	
		Students	Weighted	Students	Weighted	Students	Weighted	Students	Weighted
Exceeds	133	74	9,842	111	14,763	333	44,289	356	47,348
Meets	100	86	8,600	61	6,100	231	23,100	221	22,100
Nearly Meets	67	46	3,082	19	1,273	51	3,417	80	5,360
Low	33	42	1,386	25	825	43	1,419	65	2,145
Very Low	0	8	0	16	0	8	0	13	0
Totals		256	22,910	232	22,961	666	72,225	735	76,953
Index**		89.5		99.0		108.4		104.7	

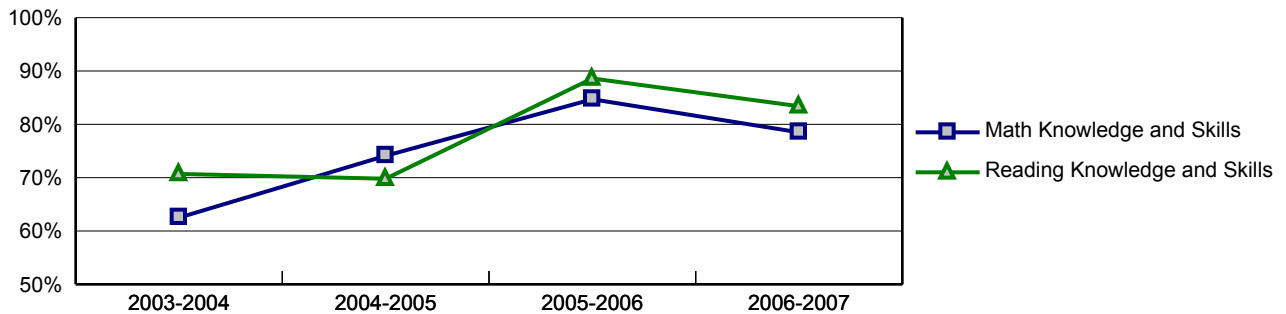
Reading Knowledge and Skills Grade 06, 07, 08

To provide for comparability over time, student performance for all years is reported based on the Achievement/Performance standards in place for the 2005-2006 and prior school years.

	Weight	2003-2004		2004-2005		2005-2006		2006-2007	
		Students	Weighted	Students	Weighted	Students	Weighted	Students	Weighted
Exceeds	133	87	11,571	93	12,369	354	47,082	359	47,747
Meets	100	84	8,400	69	6,900	239	23,900	252	25,200
Nearly Meets	67	44	2,948	48	3,216	53	3,551	78	5,226
Low	33	26	858	16	528	23	759	41	1,353
Very Low	0	1	0	6	0	0	0	3	0
Totals		242	23,777	232	23,013	669	75,292	733	79,526
Index**		98.3		99.2		112.5		108.5	

** Index = Total Weighted / Total Students

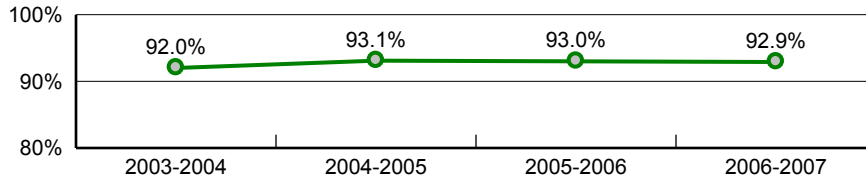
Student Performance Trends



* Please note that all numbers are rounded to the nearest tenth after every multiplication or division.

IMPROVEMENT DATA (Continued)

Attendance Trends



IMPROVEMENT FORMULAE

Math Improvement = $[(\text{Math } 2007 + \text{Math } 2006) / 2] - [(\text{Math } 2005 + \text{Math } 2004) / 2]$
 = $[(104.7 + 108.4) / 2] - [(99.0 + 89.5) / 2] = 12.3$

Reading Improvement = $[(\text{Read } 2007 + \text{Read } 2006) / 2] - [(\text{Read } 2005 + \text{Read } 2004) / 2]$
 = $[(108.5 + 112.5) / 2] - [(99.2 + 98.3) / 2] = 11.7$

Test Improvement = $[(\text{Math Improvement (2004-2007)} + \text{Reading Improvement (2004-2007)}) / 2]$
 = $[(12.3 + 11.7) / 2] = 12.0$

Attendance Improvement = $[(\text{Attend. Rate } 2007 + \text{Attend. Rate } 2006) / 2] - [(\text{Attend. Rate } 2005 + \text{Attend. Rate } 2004) / 2]$
 = $[(92.9 + 93.0) / 2] - [(93.1 + 92.0) / 2] = 0.4$

Improvement Rating: Improved

Improvement = $[(\text{Test Improvement} * .8) + (\text{Attendance Improvement} * .2)]$
 $[(12.0 * .8) + (0.4 * .2)] = 9.6$
 Rating Score = 1

Rating Score	-0.25	0	1
Rating	Declined	Stayed About The Same	Improved
Index Score	Less than -5.9	-5.9 - 3.9	4.0 or Higher

* Please note that all numbers are rounded to the nearest tenth after every multiplication or division.

SCHOOL CHARACTERISTICS DATA

Participation Detail

Grade	RL		MA		WR	
	Partic	Non-Partic	Partic	Non-Partic	Partic	Non-Partic
3	0	0	0	0		
4	0	0	0	0	0	0
5	0	0	0	0		
6	269	1	269	1		
7	262	1	262	0	251	7
8	237	1	237	1		
10	0	0	0	0	0	0

SCHOOL CHARACTERISTICS FORMULAE

Participation in Statewide Assessments = Number of Participants + Number of Non-Participants
 = 1787 + 12 = 1799

School Characteristics Rating: **Exceptional**

School Characteristics = Participants / (Participants + Non-Participants)
 1787 / 1799 = 99.3

Unacceptable	Low	Exceptional
Less than 89.5	89.5 - 94.4	94.5 or Higher

* Please note that all numbers are rounded to the nearest tenth after every multiplication or division.

OVERALL PERFORMANCE

<p>Overall Performance Rating: Strong</p> <p>Overall Performance = (Student Performance * .8) + (Student Behavior * .2) + Improvement $(3 * .8) + (2 * .2) + 1 = 3.8$</p>				
Unacceptable	Low	Satisfactory	Strong	Exceptional
Less Than 1.0	1.0 - 1.4	1.5 - 2.9	3.0 - 3.9	4.0 or Higher

NOTES

Student Performance

There are no notes.

Student Behavior

There are no notes.

Improvement

There are no notes.

School Characteristics

There are no notes.

Overall Performance

There are no notes.

*** Please note that all numbers are rounded to the nearest tenth after every multiplication or division.**