

## STUDENT PERFORMANCE DATA

### Math Knowledge and Skills Grade 08

	Weight	2000-2001		2001-2002		2002-2003		2003-2004	
		Students	Weighted	Students	Weighted	Students	Weighted	Students	Weighted
Exceeds	133	86	11,438	60	7,980	74	9,842	74	9,842
Meets	100	52	5,200	57	5,700	75	7,500	86	8,600
Nearly Meets	67	40	2,680	54	3,618	47	3,149	46	3,082
Low	33	37	1,221	36	1,188	29	957	42	1,386
Very Low	0	9	0	5	0	10	0	8	0
<b>Totals</b>		<b>224</b>	<b>20,539</b>	<b>212</b>	<b>18,486</b>	<b>235</b>	<b>21,448</b>	<b>256</b>	<b>22,910</b>
<b>Index**</b>		<b>91.7</b>		<b>87.2</b>		<b>91.3</b>		<b>89.5</b>	

### Reading Knowledge and Skills Grade 08

	Weight	2000-2001		2001-2002		2002-2003		2003-2004	
		Students	Weighted	Students	Weighted	Students	Weighted	Students	Weighted
Exceeds	133	105	13,965	63	8,379	79	10,507	87	11,571
Meets	100	59	5,900	76	7,600	91	9,100	84	8,400
Nearly Meets	67	38	2,546	45	3,015	47	3,149	44	2,948
Low	33	19	627	30	990	20	660	26	858
Very Low	0	1	0	1	0	0	0	1	0
<b>Totals</b>		<b>222</b>	<b>23,038</b>	<b>215</b>	<b>19,984</b>	<b>237</b>	<b>23,416</b>	<b>242</b>	<b>23,777</b>
<b>Index**</b>		<b>103.8</b>		<b>92.9</b>		<b>98.8</b>		<b>98.3</b>	

### Writing Grade 08

*Only grade 10 results for 2002-03 and 2003-04 are included in the rating formula. Statewide Writing assessments were not offered in grades 3, 5, and 8 in 2002-2003.*

	Weight	2000-2001		2001-2002		2002-2003		2003-2004	
		Students	Weighted	Students	Weighted	Students	Weighted	Students	Weighted
Exceeds	133	8	1,064	6	798	0	0	3	399
Meets	100	77	7,700	65	6,500	0	0	97	9,700
Nearly Meets	67	75	5,025	87	5,829	0	0	80	5,360
Low	33	54	1,782	53	1,749	0	0	53	1,749
Very Low	0	0	0	0	0	0	0	1	0
<b>Totals</b>		<b>214</b>	<b>15,571</b>	<b>211</b>	<b>14,876</b>			<b>234</b>	<b>17,208</b>
<b>Index**</b>		<b>72.8</b>		<b>70.5</b>				<b>73.5</b>	

### Math Problem Solving Grade 08

*Only grade 10 results for 2002-03 are included in the rating formula. Statewide Math Problem Solving assessments were not offered in grades 3, 5, and 8 in 2002-2003.*

	Weight	2000-2001		2001-2002		2002-2003		2003-2004	
		Students	Weighted	Students	Weighted	Students	Weighted	Students	Weighted
Exceeds	133	21	2,793	9	1,197	0	0	21	2,793
Meets	100	85	8,500	85	8,500	0	0	73	7,300
Nearly Meets	67	9	603	24	1,608	0	0	6	402
Low	33	91	3,003	83	2,739	0	0	76	2,508
Very Low	0	10	0	12	0	0	0	63	0
<b>Totals</b>		<b>216</b>	<b>14,899</b>	<b>213</b>	<b>14,044</b>			<b>239</b>	<b>13,003</b>
<b>Index**</b>		<b>69.0</b>		<b>65.9</b>				<b>54.4</b>	

### Science Grade 08

*Data are not included in the ratings and are displayed for information only.*

	Weight	2000-2001		2001-2002		2002-2003		2003-2004	
		Students	Weighted	Students	Weighted	Students	Weighted	Students	Weighted
Exceeds	133							48	6,384
Meets	100							140	14,000
Nearly Meets	67							41	2,747
Low	33							14	462
Very Low	0								
<b>Totals</b>								<b>243</b>	<b>23,593</b>
<b>Index**</b>								<b>97.1</b>	

## STUDENT PERFORMANCE FORMULAE

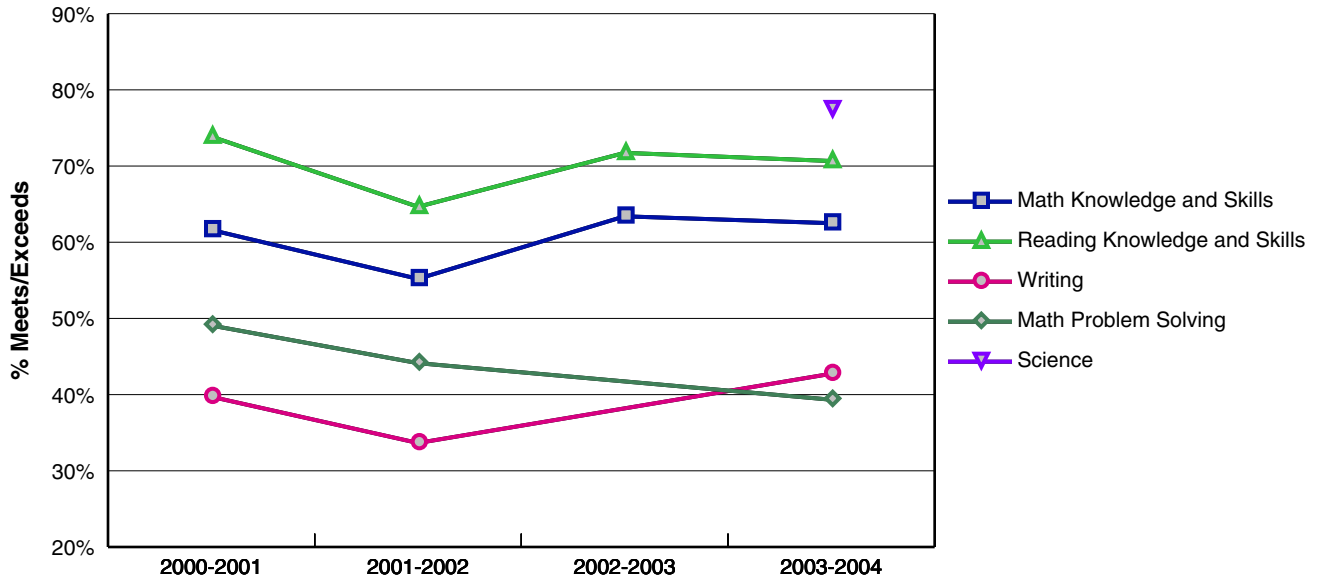
**Student Performance** =  $[(.50 * \text{Math Index}) + (.50 * \text{Read Index})]$

**Student Performance 2002-2003** =  $[(.50 * 91.3) + (.50 * 98.8)] = 95.0$

**Student Performance 2003-2004** =  $[(.50 * 89.5) + (.50 * 98.3)] = 93.9$

<b>Student Performance Rating: Satisfactory</b>					
Student Performance = (Student Performance 02-03 + Student Performance 03-04) / 2					
(95.0 + 93.9) / 2 = 94.5					
Rating Score = 2					
Rating Score	0	1	2	3	4
Rating	Unacceptable	Low	Satisfactory	Strong	Exceptional
Index Score	Less than 60.0	60.0 - 69.9	70.0 - 99.9	100.0 - 114.9	115.0 or Higher

### Student Performance Trends



*Note: In this graph, "Conditionally Met" for Writing and Math Problem Solving is NOT included in %Meets/Exceeds.*

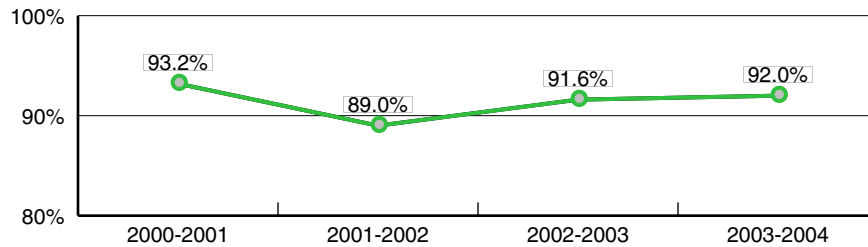
**\* Please note that all numbers are rounded to the nearest tenth after every multiplication or division.**

## STUDENT BEHAVIOR FORMULAE

**Two-Year Average Attendance Index 2002-03, 2003-04** =  $[(\text{Attendance Rate 2003} + \text{Attendance Rate 2004}) / 2]$   
 =  $[(91.6 + 92.0) / 2] = 91.8$

<b>Student Behavior Rating: Low</b>					
Student Behavior = Two-Year Avg. Attendance Index 91.8					
Rating Score = 1					
<b>Rating Score</b>	0	1	2	3	4
<b>Rating</b>	Unacceptable	Low	Satisfactory	Strong	Exceptional
<b>Index Score</b>	Less than 89.0	89.0 - 91.9	92.0 - 93.9	94.0 - 95.9	96.0 or Higher

### Attendance Trends



\* Please note that all numbers are rounded to the nearest tenth after every multiplication or division.

## IMPROVEMENT FORMULAE

**Math Improvement** =  $[(\text{Math } 2004 + \text{Math } 2003) / 2] - [(\text{Math } 2002 + \text{Math } 2001) / 2]$   
 =  $[(89.5 + 91.3) / 2] - [(87.2 + 91.7) / 2] = 0.9$

**Reading Improvement** =  $[(\text{Read } 2004 + \text{Read } 2003) / 2] - [(\text{Read } 2002 + \text{Read } 2001) / 2]$   
 =  $[(98.3 + 98.8) / 2] - [(92.9 + 103.8) / 2] = 0.2$

**Test Improvement** =  $[(\text{Math Improvement (2001-2004)} + \text{Reading Improvement (2001-2004)}) / 2]$   
 =  $[(0.9 + 0.2) / 2] = 0.6$

**Attendance Improvement** =  $[(\text{Attend. Rate } 2004 + \text{Attend. Rate } 2003) / 2] - [(\text{Attend. Rate } 2002 + \text{Attend. Rate } 2001) / 2]$   
 =  $[(92.0 + 91.6) / 2] - [(89.0 + 93.2) / 2] = 0.7$

### Improvement Rating: Stayed About The Same

Improvement =  $[(\text{Test Improvement} * .8) + (\text{Attendance Improvement} * .2)]$   
 $[(0.6 * .8) + (0.7 * .2)] = 0.6$

Rating Score = 0

<b>Rating Score</b>	-0.25	0	1
<b>Rating</b>	Declined	Stayed About The Same	Improved
<b>Index Score</b>	Less than -4.9	-4.9 - 4.9	5.0 or Higher

## SCHOOL CHARACTERISTICS FORMULAE

**Participation in Statewide Assessments** = Number of Tests + Number Absent or Non-Attempt  
 =  $1026 + 0 = 1026$

### School Characteristics Rating: Exceptional

School Characteristics = Number of Tests / Number Eligible  
 $1026 / 1026 = 100.0$

Unacceptable	Low	Exceptional
Less than 85.0	85.0 - 94.9	95.0 or Higher

\* Please note that all numbers are rounded to the nearest tenth after every multiplication or division.

## OVERALL PERFORMANCE

<p><b>Overall Performance Rating: Satisfactory</b></p> <p>Overall Performance = (Student Performance * .8) + (Student Behavior * .2) + Improvement  <math>(2 * .8) + (1 * .2) + 0 = 1.8</math></p>				
Unacceptable	Low	Satisfactory	Strong	Exceptional
Less Than 1.0	1.0 - 1.4	1.5 - 2.9	3.0 - 3.9	4.0 or Higher

### NOTES

---

**Student Performance**

There are no notes.

---

**Student Behavior**

There are no notes.

---

**Improvement**

There are no notes.

---

**School Characteristics**

There are no notes.

---

**Overall Performance**

There are no notes.

---

\* Please note that all numbers are rounded to the nearest tenth after every multiplication or division.